
Public Consultation
Revised Restoration Plans

September 2018

Shapfell Quarry



TATA STEEL





Introduction

This brochure is provided by Tata Steel which is updating plans to fully restore Shapfell Quarry in Cumbria.

As part of the plans, Tata Steel is proposing to withdraw an existing planning application for further extraction and deepening of the Quarry.

The purpose of this brochure is to provide you with an update on activities at Shapfell Quarry and to provide details of the updated draft restoration plan. Tata Steel is providing you with an opportunity over the coming weeks to provide feedback on the updated restoration plan before planning applications are submitted to Cumbria County Council.

We thank you for taking time to read the information and for your feedback. More information about how you can get in touch is provided.

Background

Limestone has been quarried from Shapfell since 1962 and through this work the Quarry has become a major employer in the local area, contributing considerably to the local economy.

As part of the proposals it is intended to continue production at the Works site so there will be no loss of employment. However, the use of the Quarry has lessened in recent years and the Works are now largely operated using limestone from other quarries.

The existing restoration plan was approved in 2008. This plan is no longer practically achievable or environmentally preferable as it would involve draining the water and infilling of the large waterbody void. The updated restoration plan will ensure sensitive and progressive restoration of the Quarry.

There will be no deepening or lateral extension of the Quarry as part of the proposals. Tata Steel believes it is important to return the land to the landowner in a suitably restored condition.

Shapfell Quarry today

Over time, two sites have operated at Shapfell; the Quarry which is located to the east of the M6, and the Works site located to the west of the M6. The site location plan below illustrates the relationship between the Quarry and the Works site. The entire site comprises approximately 120 hectares (297 acres) of land.

These sites have been linked since the opening of the quarry, with quarried stone being transported from the Quarry to the Works site. There, stone is crushed, washed and burnt; ready to be used in the steelmaking process. This product has been a part of the wider UK steel industry for more than 55 years.

Since 2009, Tata Steel has primarily imported limestone from other sources including the nearby Shap Beck Quarry and from Derbyshire. This has enabled the Works site to continue production. As part of the washing process, a mixture of clay and small limestone particles are generated. This provides an entirely natural calcareous limestone material ideally suited to the restoration of Shapfell Quarry.

Options have been explored for continuing to quarry limestone from Shapfell, but the decision has been taken not to pursue this deepening or lateral extension of the Quarry. Instead to continue with the full restoration of the site and to return the land to the landowner in a suitably restored condition.



Shapfell history

1962: Quarrying began at Shapfell

1996: Original restoration plan approved

2008: An application was submitted to extend the quarry

2009: Active drilling and shot blasting ceased at the Quarry (although a limited amount of already quarried stone has been processed for the ongoing restoration)

2014: Additional information submitted to Cumbria Council

2018: The current application will be withdrawn and new applications submitted for restoration

Site Location



A new restoration plan

In 2008, the current restoration scheme was approved for the Quarry site. This restoration plan required the whole quarry void to be refilled.

Approximately 37ha (91.5 acres) of the quarry has already been restored in accordance with the approved scheme. However, other parts of the site, including the main quarry void, are yet to be fully restored.

Why is a new restoration plan needed?

Since the existing restoration plan was approved, the conditions of the site and its landform have changed. In particular, the main quarry void has formed a large waterbody covering an area of approximately 30 hectares. This area of the site has become a habitat for wildlife. Water levels have also been monitored over the years and the water level has stabilised meaning that the waterbody is now an important feature of the landscape.

The new restoration plan has been prepared taking into account these changed conditions of the site. The updated restoration plan has been designed to retain and protect the waterbody, as well as to maximise the amount of land reserved for nature conservation.

The plan is to withdraw the existing undetermined planning application to extend the use of the quarry and submit two Section 73 applications. The Section 73 applications are required to amend conditions attached to the existing planning permissions. The applications will seek agreement for a revised restoration plan and an extension to the timescale for completing the restoration. This new agreement will facilitate the phased restoration of the Quarry set out in this brochure.

The revised restoration plan will:



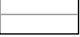





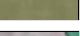
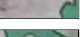
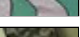
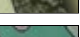

- Take approximately 18 years to complete and be implemented in phases to respect existing wildlife habitats
- Restore the site levels to those of the surrounding area to the south, reconnecting the quarry to the surrounding landscape (including the SSSI to the south)
- Retain the large waterbody to the east of the site which has become an important local habitat for some species
- Install a new footpath to encourage recreational enjoyment of the area (subject to the landowner's permission, and subject to agricultural requirements)
- Include planting of mixed native woodland species.

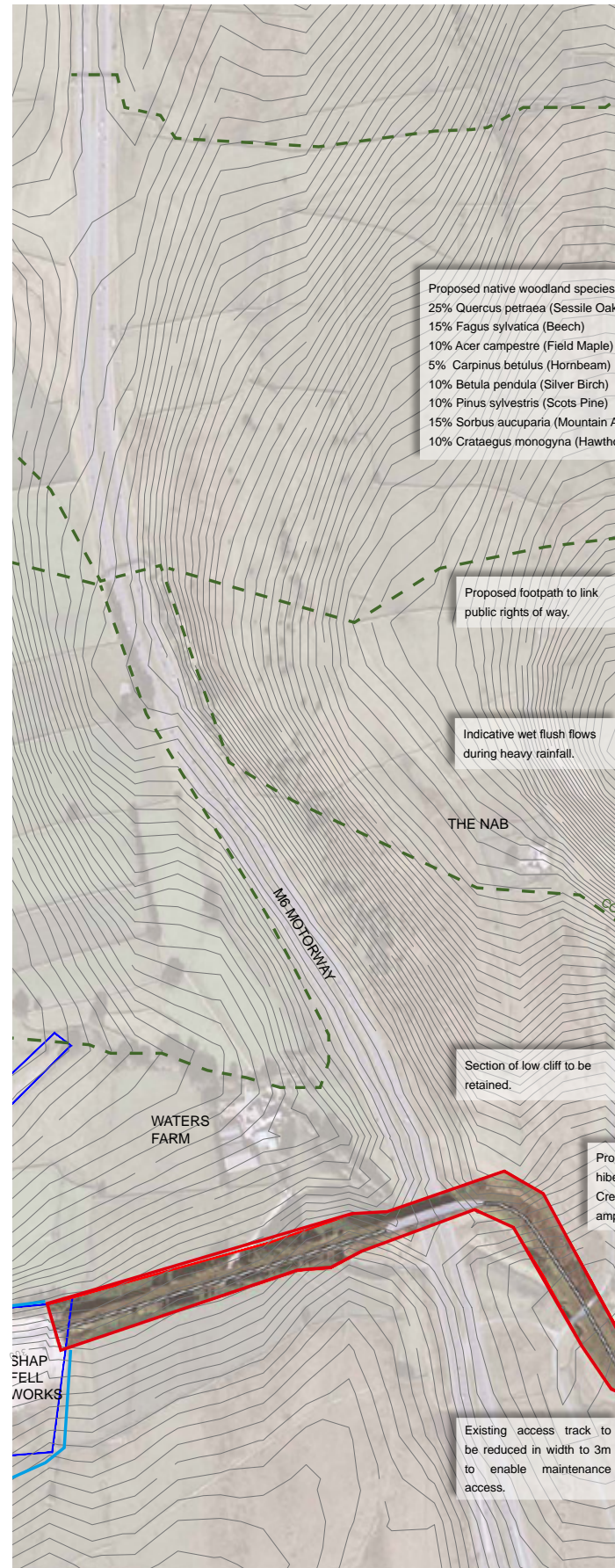


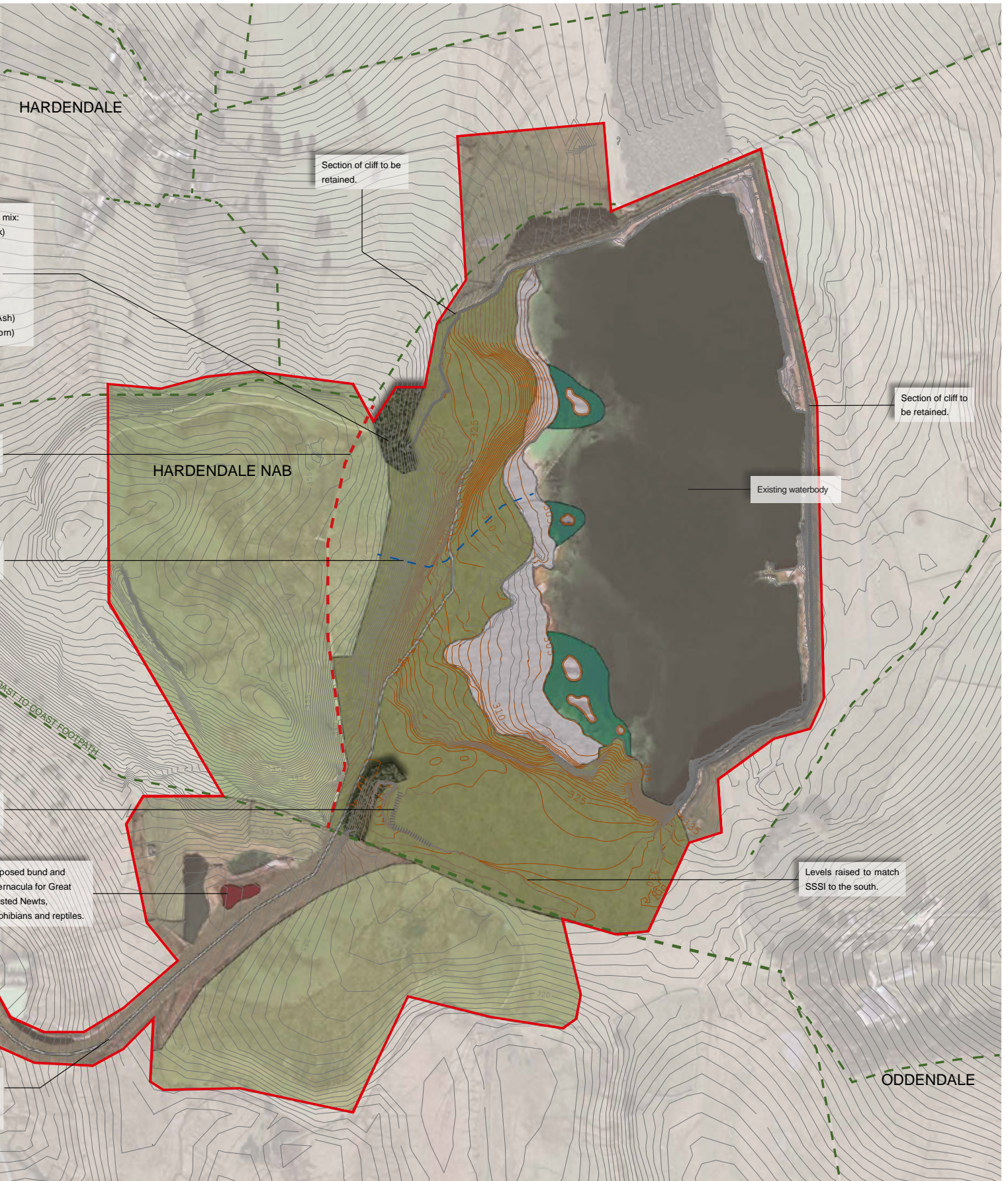
A new restoration plan

The plan on this page provides a visual guide as to how we are proposing to restore Shapfell Quarry. The plan is in the draft stages and is being informed by ongoing technical surveys, the evolving conditions of the site and discussions with Cumbria County Council.

LEGEND

-  Shap Fell Quarry planning application boundary
-  Shap Fell Works boundary
-  Existing Contours
-  New Contours
-  Cliff edge
-  Previously restored areas of quarry
-  Existing Public Right of Way
-  Proposed footpath
-  Proposed semi-improved grassland and basic flush slope
-  Proposed bare ground
-  Proposed gravel islands
-  Proposed mixed native woodland
-  Proposed ephemeral marshy/shallow scrape





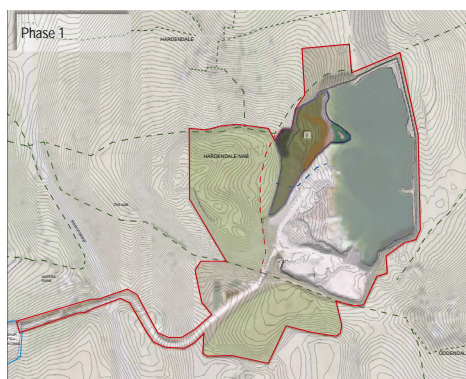
Phasing plan

The plans below show how the sensitive and progressive restoration plan can be delivered in phases. Although the full restoration is expected to take 18 years, the vast majority of the land will be restored and returned to the landowner in the next ten years.

The phasing has been designed to restore the slope areas safely, avoiding winter periods where possible to respect local ecology such as wintering birds. Weekend activity will also be avoided where possible, to limit any disturbance to neighbours.

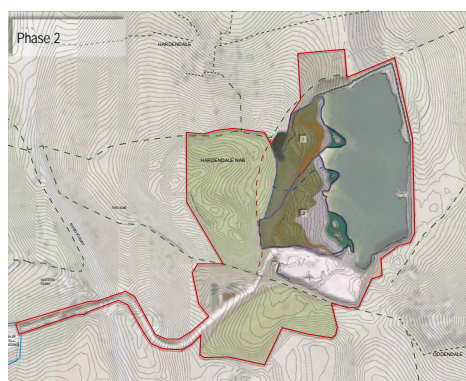
In summary the phases are expected to come forward as follows:

The completion of each phase will be followed by a five year aftercare period, within which the restoration process will be carefully monitored. It is also proposed to undertake an annual site walkover, attended by technical experts including the County Council's appointed Ecologist and Geotechnical specialist. This will help to track the progress of the restoration.



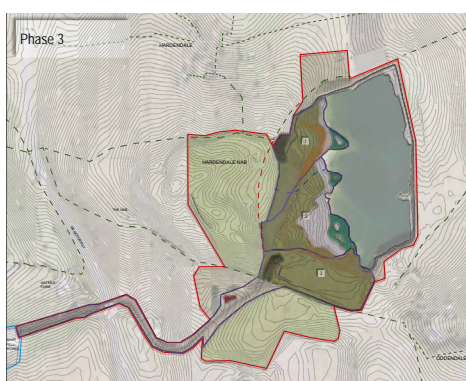
Phase 1

It is anticipated that the first phase (8.5 ha) will begin in 2018/2019, enter the aftercare period in 2021 and return to the landowner by 2026.



Phase 2

It is anticipated that the second phase (11.97 ha) will begin in 2022, with the land expected to go into aftercare in 2024. This will result in the complete restoration of the land in 2029.



Phase 3

The third phase (10.95 ha) will take place across the full duration of the restoration. The aftercare period will be staggered over the final 5 years, with completion expected in 2037.

The timescales provided are indicative and could be affected by changing ecological and weather conditions.

Technical details

The draft restoration plan has been informed by a number of technical studies, as well as the existing conditions and parameters of the site.

Some of these are summarised below.



Environmental designations

Part of the south-eastern corner is located within the Crosby Ravensworth Fell Site of Specific Scientific Interest (SSSI). The draft restoration plan has been designed to improve the quality of habitat within and adjacent to the SSSI.



Transport and highways

Following the very limited activity at the Quarry post-2009, Tata Steel has continued to develop the use of rail where possible for both imported and outgoing products. The vast majority of Tata Steel's product is transported by rail. All operations are expected to continue as normal. Neighbours to the Quarry site are very important, so Tata Steel will continue to actively monitor and work with the local authorities to ensure this activity is kept at a safe level.



Landscape and visual impact

A Landscape Management Plan will be implemented to ensure that the landscape is restored effectively. Technical and survey work that has already been undertaken indicates that the restoration will improve the quality of the existing habitat within the Quarry boundaries, as well as some of the areas adjacent to it.

As the restoration will be phased, the changes to the landscape and the visual impact these will have will be incremental. As the site is not located close to a residential area, the visual impact will be primarily limited to the Public Right of Way (PRoW) network located within the local area. The quarry will be most visible from relatively short duration views from the PRoW in the Yorkshire Dales National Park to the east of the site.

It is our expert's view that the revised restoration scheme will ultimately have a beneficial landscape and visual impact on the area.



Air quality / noise

An air quality management plan focussing on dust control will be developed in liaison with the County Council, and this will include the appropriate mitigation measures.

In the long term, restoring the quarry to a more natural environment will have beneficial effects on dust levels in the local area.

As the site is located in a rural area with just a few residential properties nearby, any noise impacts will be kept to a minimum level for these properties. A Noise and Vibration Management Plan (NVMP) will be developed as advised by the County Council to ensure that the appropriate mitigation takes place.

Tata Steel in the community

Tata Steel is a major employer in the local area, employing around 50 local staff at Shapfell. It contributes to the regional economy in business rates each year and over the years have donated approximately £15,000 to local schools and community projects.

The Tata Steel Shapfell team has been actively engaged with the local communities in and around Shap and the local villages for a number of years, providing donations and support to local worthy and charitable causes, and undertaking volunteer work.

Some examples include:

- Donating stone and several weeks of volunteer support to help create a local memorial garden in Shap village
- Supporting local schools – including donating prizes and money to support IT developments at Shap C of E Primary School, a dragon competition used to acknowledge our links to South Wales steelmaking, a donation to help Orton C of E Primary School install a sound system, and a donation towards a cycle shelter to help encourage cycling to school
- The installation (with Hanson) of an electronic speed sign in the village
- Providing stone and labour on a project to build a cairn linking Scotland and England
- Providing stone to build defences against local river bank flood erosion
- A donation towards a sensory room at James Rennie School in Carlisle
- Other volunteer work - including helping with young enterprise initiatives at local schools and helping at triathlons.



Next steps

Tata Steel and its project team of specialists are undertaking a number of technical surveys to help inform the plans.

We would like to hear what you think of the plans and if you have any thoughts on how they can be improved.

This brochure is also available to view in digital form on the website www.shapfellconsultation.co.uk along with the answers to some Frequently Asked Questions.

Tell us what you think

There are a number of ways you can get in touch.
You can:

- Complete the feedback postcard provided in this brochure and send via Freepost
- Email us at shapfellconsultation@turley.co.uk
- Visit the website at www.shapfellconsultation.co.uk
- Call us on Freephone **0808 168 8296**

Please ensure feedback is received by **Tuesday 25th September 2018**

Please note that this consultation relates only to the restoration scheme area.



Your feedback

Q1: I support the updated restoration plan

Strongly agree Agree Undecided Disagree Strongly disagree

☐ ☐ ☐ ☐ ☐

Q2: I believe that the updated plans will improve and enhance the area

Strongly agree Agree Undecided Disagree Strongly disagree

☐ ☐ ☐ ☐ ☐

Q3: I agree that Shapfell Quarry makes a valuable contribution to the local area

Strongly agree Agree Undecided Disagree Strongly disagree

☐ ☐ ☐ ☐ ☐

Q4: Tata Steel is keen to continue playing an active role in the community.
Do you have any suggestions or ideas of how Tata Steel can do this?

Q5: Do you have any further comments? Please use the space provided.

Please tick here if you would like to attend one of the open events.
Please ensure you provide an email address or phone number so we can contact you to confirm.

☐ Tuesday 18th September ☐ Monday 24th September

If you would like us to keep in touch with you please add your details below.

Name

Address

Postcode

Email

Phone

What happens next

We will carefully consider all feedback received while preparing the updated restoration plans and aim to submit the Section 73 applications to Cumbria County Council later this year. Upon completion of the restoration the land will be returned to the landowner.

Come and meet us

If you would like to find out more about how Shapfell is currently operated or ask us any questions about the proposed restoration plan, we are holding several open events at the offices at the Shapfell Works site.

The events will take place on:

Tuesday 18th September 2018

between 1 - 3pm & 5.30 – 7.30pm

Monday 24th September 2018

between 1 - 3pm & 5.30 – 7.30pm

If you would like to attend one of these open events please ensure you register your interest in advance. You can do this on the website, by emailing **shapfellconsultation@turley.co.uk**, by calling **0808 168 8296** or by **returning the postcard provided**. We will contact you directly in advance of your preferred event with further details.

We thank you for reading this brochure and are grateful for your time. If you have any questions please do not hesitate to contact us.



Shapfell Quarry Consultation
Freepost RTEH-HCTJ-RRBK
Turley
1 New York Street
Manchester
M1 4HD

TATA STEEL

