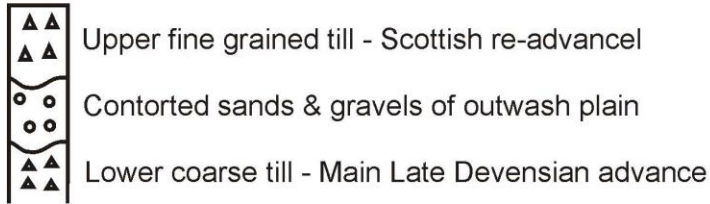


St Bees Beach and Golf Course

STRATIGRAPHY

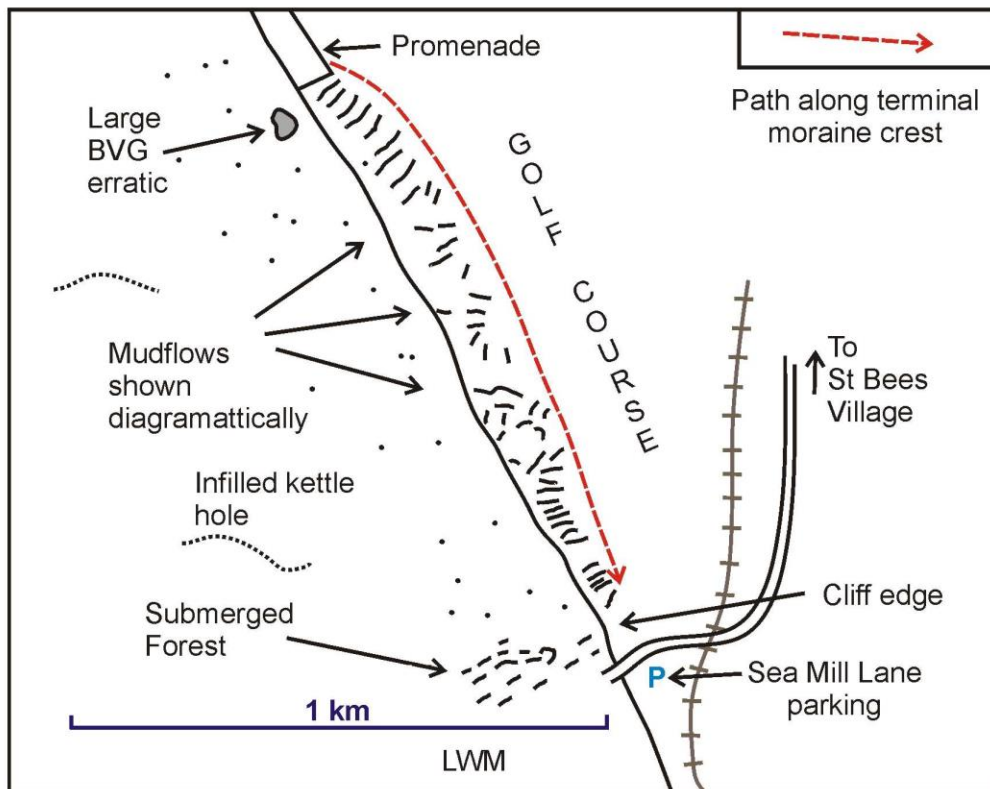
2 tills are present

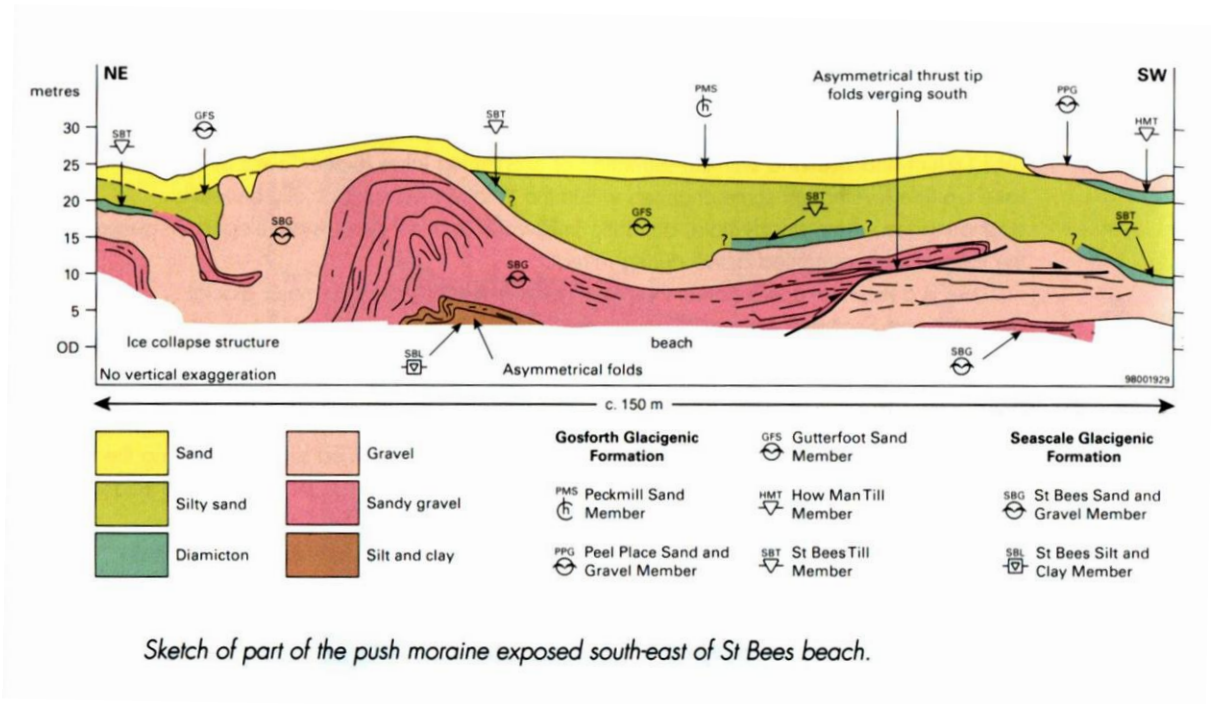


Submerged forest (roots in grey clay) exposed, normally by sewage outlet southwest from Sea Mill Lane and after gales in most winters near Promenade to north. (dated 8-9,000 BP. Flandrian transgression. Pollen analysis (key locality) in kettle hole towards south end of cliffs

LANDFORM

Terminal moraine (difficult to recognise) of Scottish Ice Readvance - cliffs retreating rapidly by landslip and mud flow - Outwash plain - glacial erratic - longshore drift, storm beaches.





References

- WILLIAMS et al, Late Devensian glaciotectionic deformation at St Bees, *Journal of the Geological Society of London*, 2001, Vol 158, pp125-135.
- MERRITT & AUTON Lithostratigraphy and depositional history of Quaternary deposits in the Sellafield district---2000, *PYGS*, Vol 53, Part 2, pp129-154.
- AKHURST et al , *Geology of the west Cumbria district*, British Geological Survey, 1997, pp103- 6.
- MERRITT, Glacial sediments around St Bees, *Proceedings of the Cumberland Geological Society*, 1995, Vol 6, part 1, pp82-4